

# Porcelain Laminate Venners

Dr. Dario Adolfi

Porcelain laminate veneers are considered the most esthetic means of creating a more pleasing and beautiful smile. They require a minimal amount of tooth reduction and are therefore, a more conservative restoration. Porcelain veneer allow us to alter tooth position, shape, and color. High quality of impression and preparation are essential for laboratory success. All the laboratory procedures will be made with semi adjustable Protar/Kavo articulator.

**Duration:** 2 days

## PROGRAM

### Day 1

#### Welcome desk (9:00 - 9:30)

- Basic course outline

#### Theory (9:30 - 10:30)

- Clinical and laboratorial considerations
  - Diagnostic wax-up
  - Temporary restorations
- Esthetic and Functional Planning
  - Indication
  - Material
  - Step by step for adhesive cementation and selection of resin cement to achieve a natural match of shade
- Impression
- Master Cast
- Refractory master cast
- Ceramic build up and internal stains

#### Coffee-Break (10:30 - 11:00)

#### Hands on demonstration (11:00 - 11:30)

- How to produce the master cast and refractory master cast

#### Hands on (11:30 - 13:00)

- Construction the master cast and refractory master cast

#### Lunch (13:00 - 14:00)

#### Hands on (14:00 - 15:30)

- (continuation) refractory master cast

#### Coffee-Break (15:30 - 16:00)

#### Hands on demonstration (16:00 - 17:30)

- Ceramic build-up of the upper central and lateral

#### Live on demonstration with patient (17:30 - 18:30)

- Preparation and impression for porcelain laminate veneer

## PROGRAM

### Day 2

#### **Hands on** (9:00 - 10:30)

- Ceramic build-up of the upper central and lateral

#### **Coffee-Break** (10:30 - 11:00)

#### **Hands on demonstration** (11:00 - 13:00)

- Internal stain technique
- Ceramic build-up with opalescent materials

#### **Lunch** (13:00 - 14:00)

#### **Hands on** (14:00 - 15:30)

- Internal stain technique
- Ceramic build-up with opalescent materials

#### **Coffee-Break** (15:30 - 16:00)

#### **Hands on demonstration** (16:00 - 16:30)

- Surface Texture
- Glaze
- Superficial Gloss

#### **Hands on** (16:30 - 17:30)

- Surface Texture
- Glaze
- Superficial Gloss

#### **Live on demonstration with patient** (17:30 - 18:30)

- Porcelain laminate veneer cementation

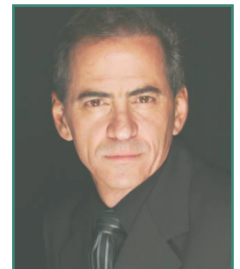
## INFRASTRUCTURE

Reaching excellence in our acting field needs more than will and dedication. It is necessary to have the adequate tools and a favorable place. To accomplish this, our facility include different spaces for every student's needs including a room with work benches for laboratorial courses, a surgery center, consultation rooms, a room with searching terminals connected to the internet and an auditorium for 120 people (able to make teleconferences and to receive long distance images). The entire infrastructure was planned to offer the best possible experience for the students.



## DR. DARIO ADOLFI

- Graduated at University of Sao Paulo in 1979
- Caramist, director of Spazio Odontologico
- International lecturer with practical and demonstrative courses in South America, Europe, Australia, USA and Asia
- Author of the Book "The Natural Esthetics" published by Quintessence International in Portuguese, English, Spanish and Russian
- Author of articles in the Esthetic field.



## CONTACT

**FOR MORE INFORMATION, CALL: + 55 (11) 3543.0900**

FAX: (11) 3543.0901

Address: Av. Presidente Juscelino Kubitschek, 1726 - 21º andar - Itaim Bibi - CEP 04543-000

Site: [www.spazioeducation.com](http://www.spazioeducation.com)

E-mail: [contato@spazioeducation.com](mailto:contato@spazioeducation.com)